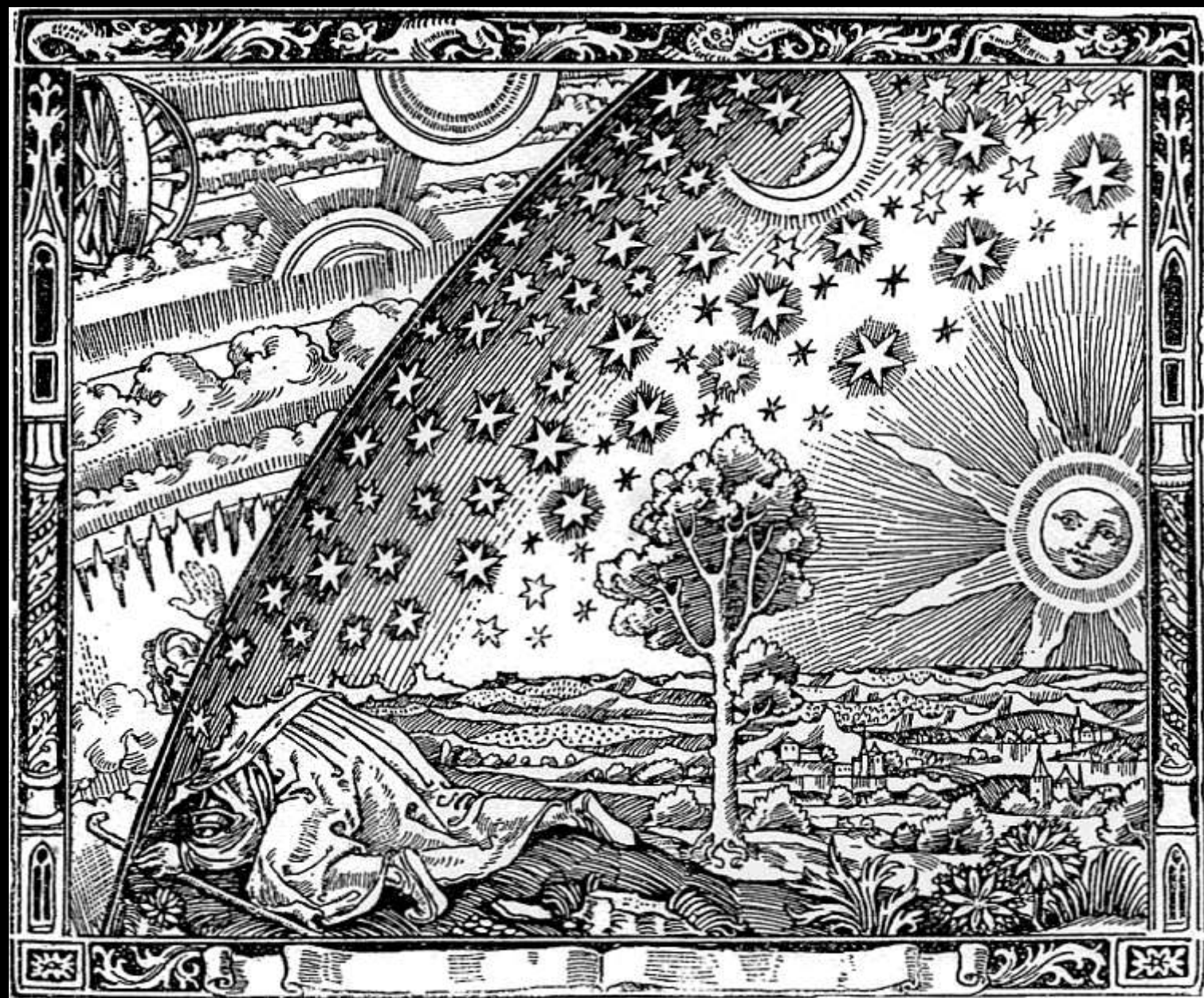


# Au-delà des étoiles

Sylvie Vauclair

Mardi 22 août 2017

Festi'Val d'Azun



Schema huius præmissæ diuisionis Sphærarum .





Credit: Apollo 8. NASA





## **Earth and Moon seen from SATURNE**

**Spacecraft:** Sonde spatiale Cassini

**Date taken:** Septembre 2006





L'astronaute Greg Chamitoff au hublot dans l'ISS, credit Expedition 18 crw, NASA



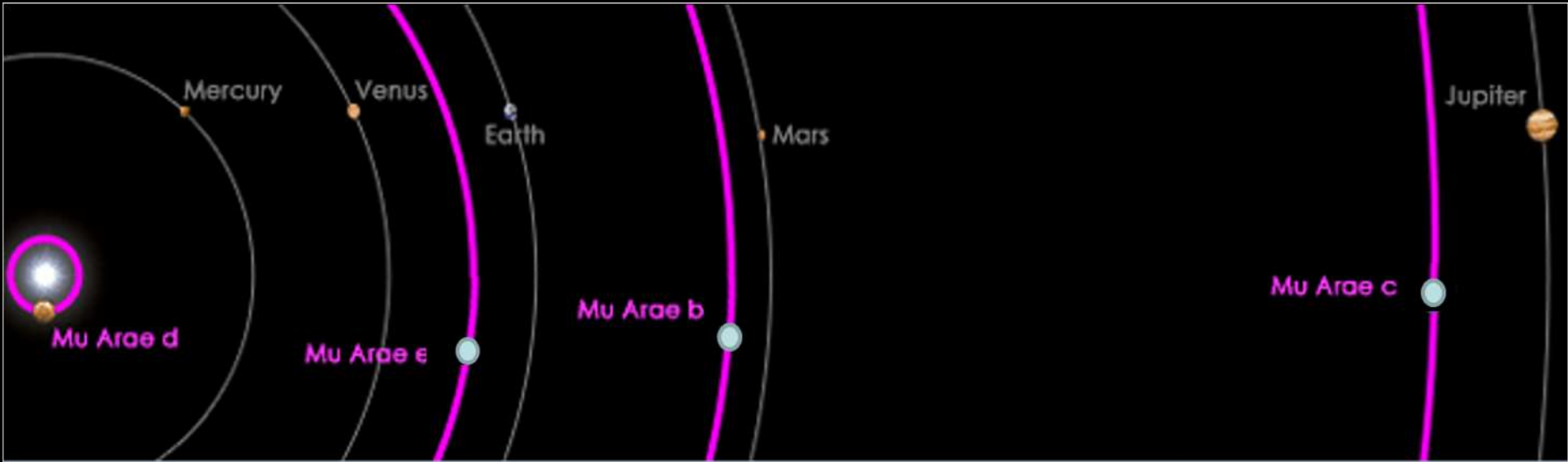




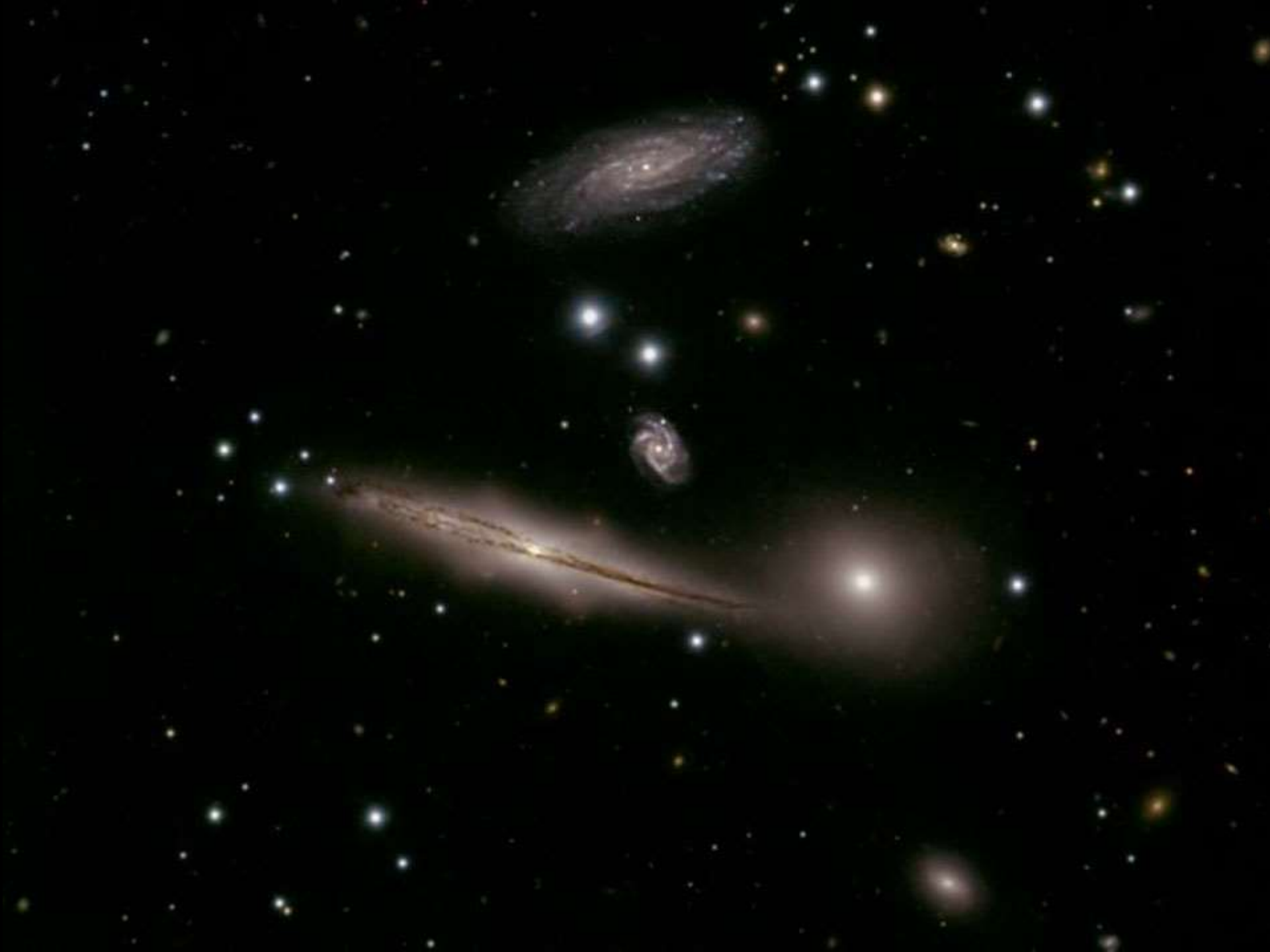
Rover curiosity

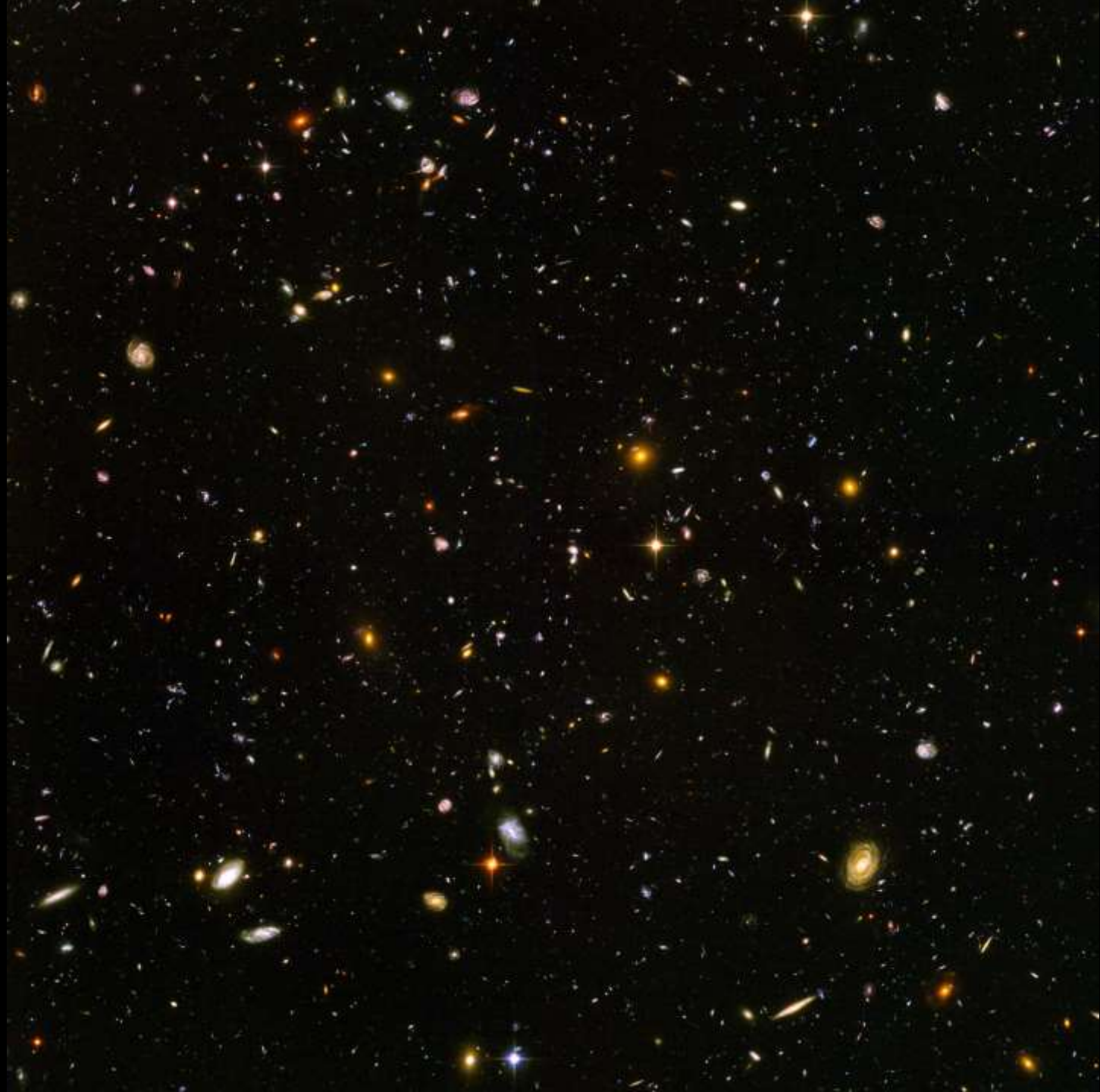






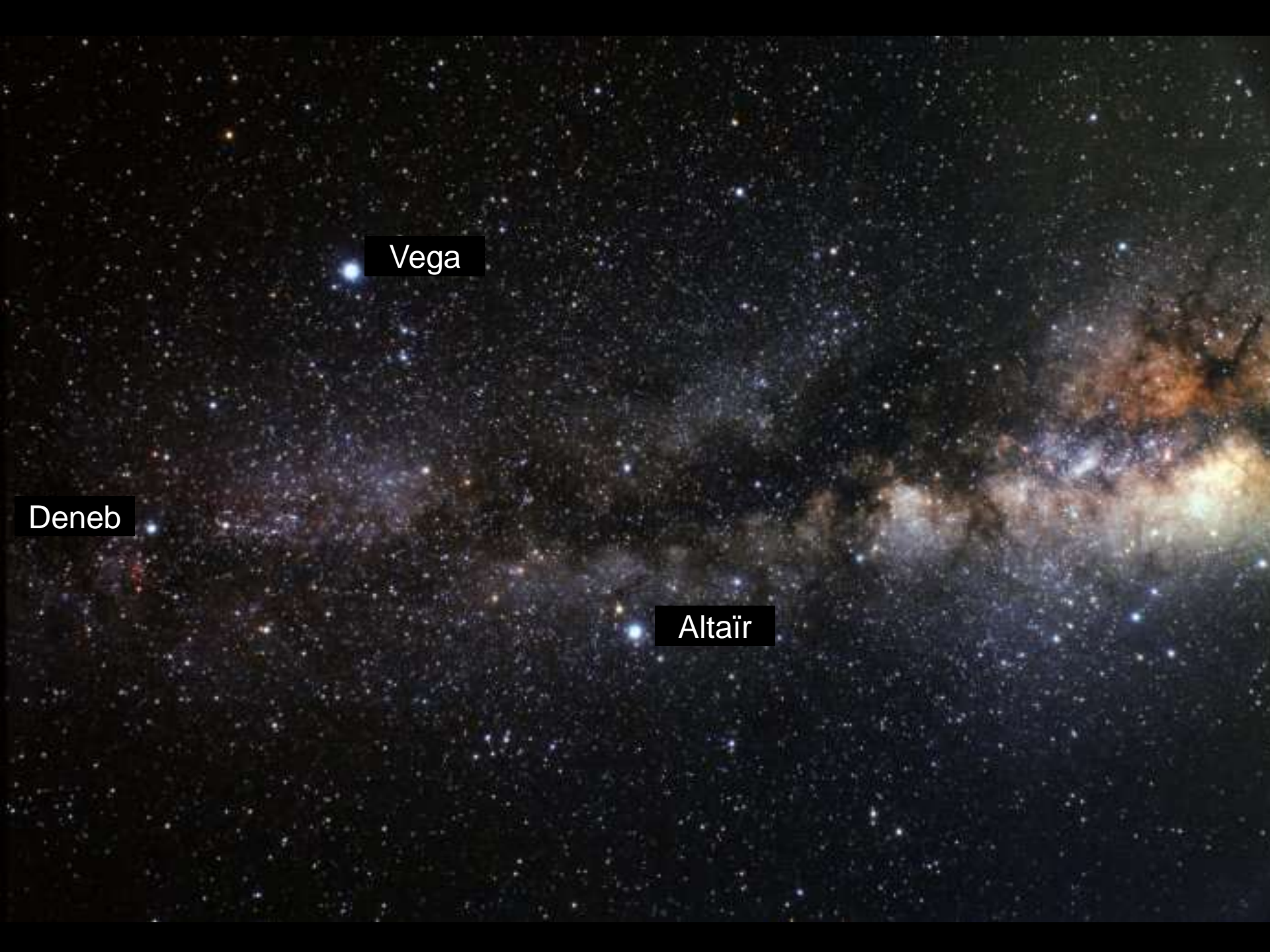
The Mu Arae Star System in comparison with Earth's Solar System. Illustration Copyright Gavin Rymill 2006







Notre ciel nocturne

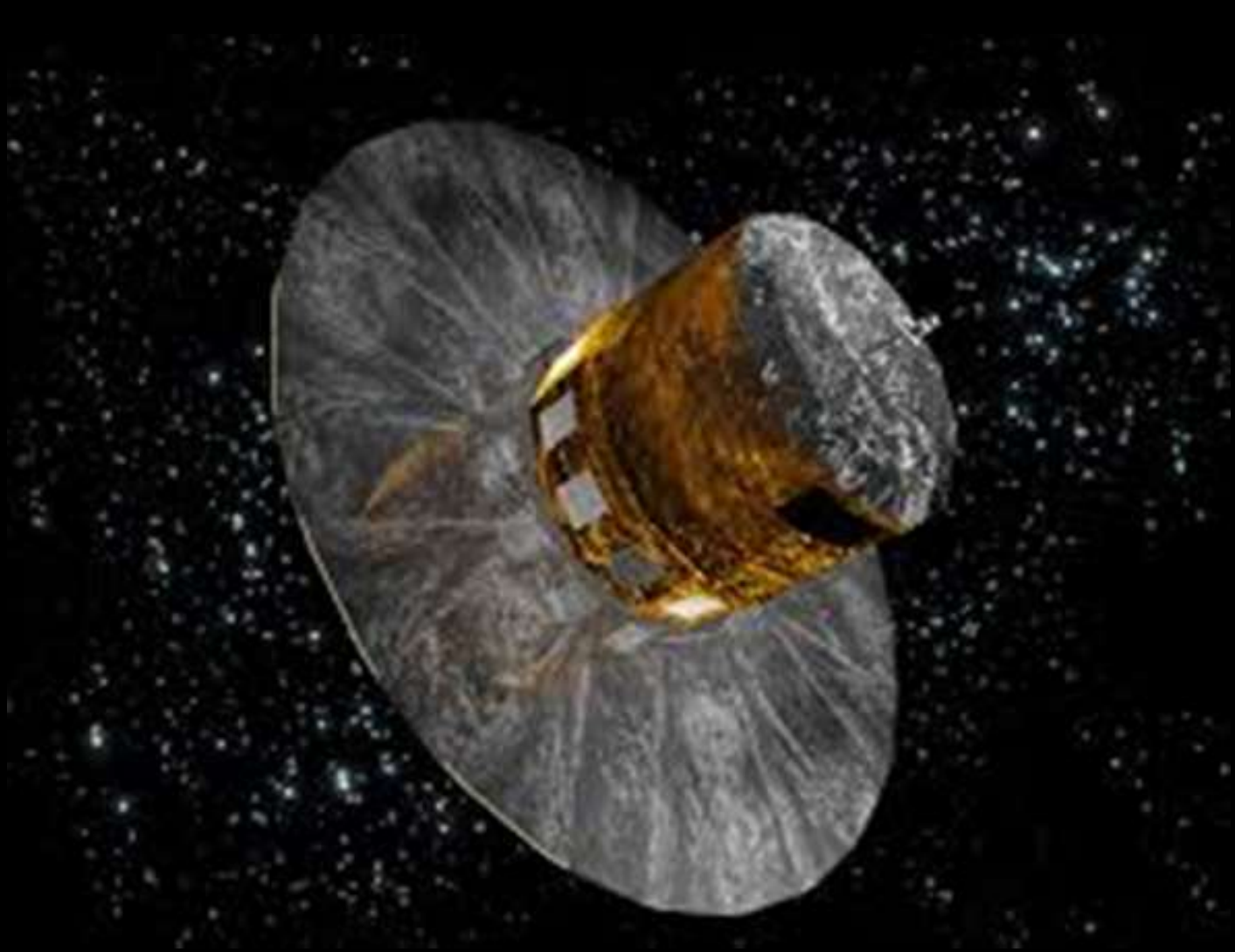


Vega

Deneb

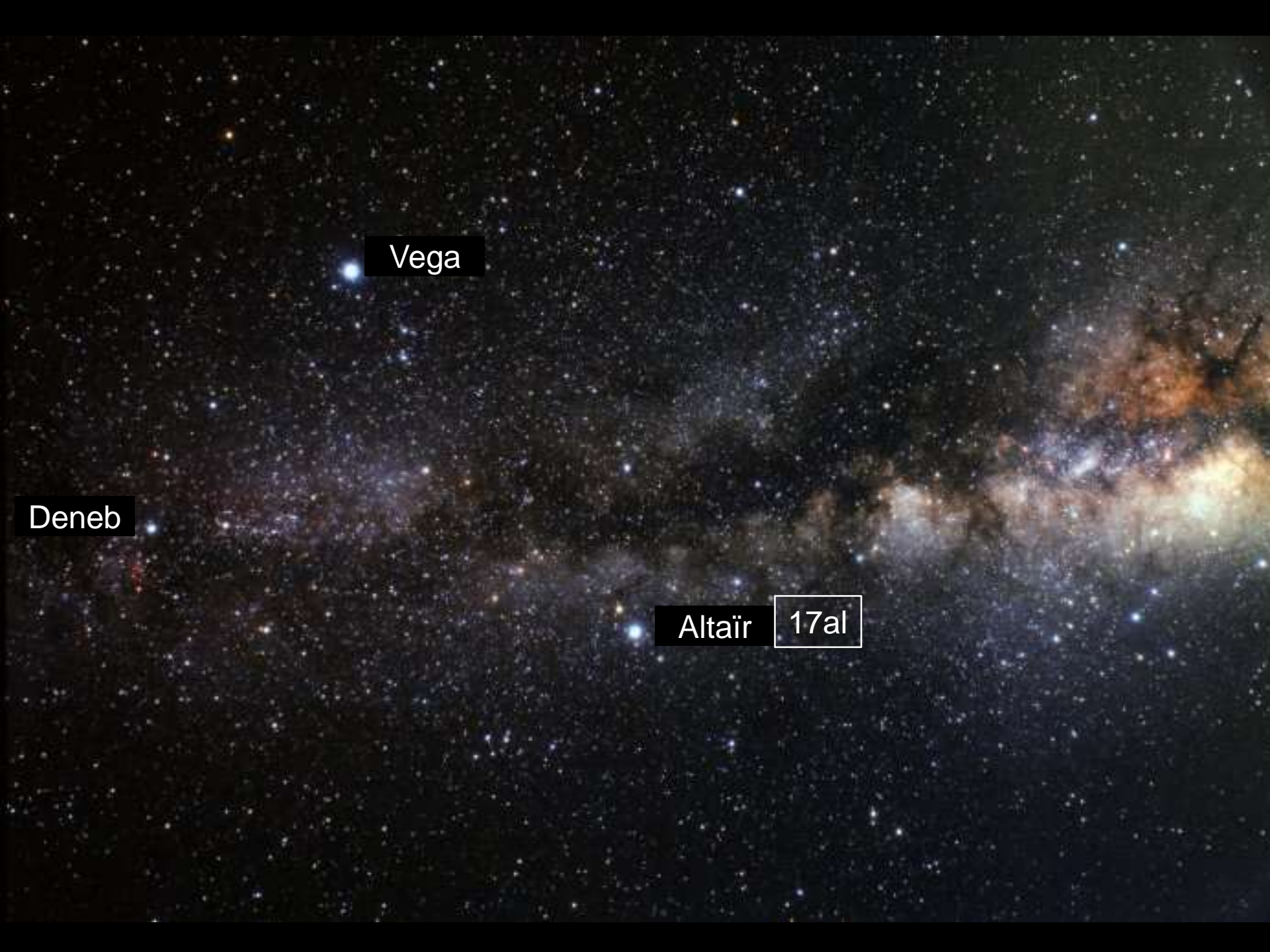
Altair





*Gaia*

Monté à Toulouse (Astrium),  
lancé depuis la Guyane le 19 décembre 2013

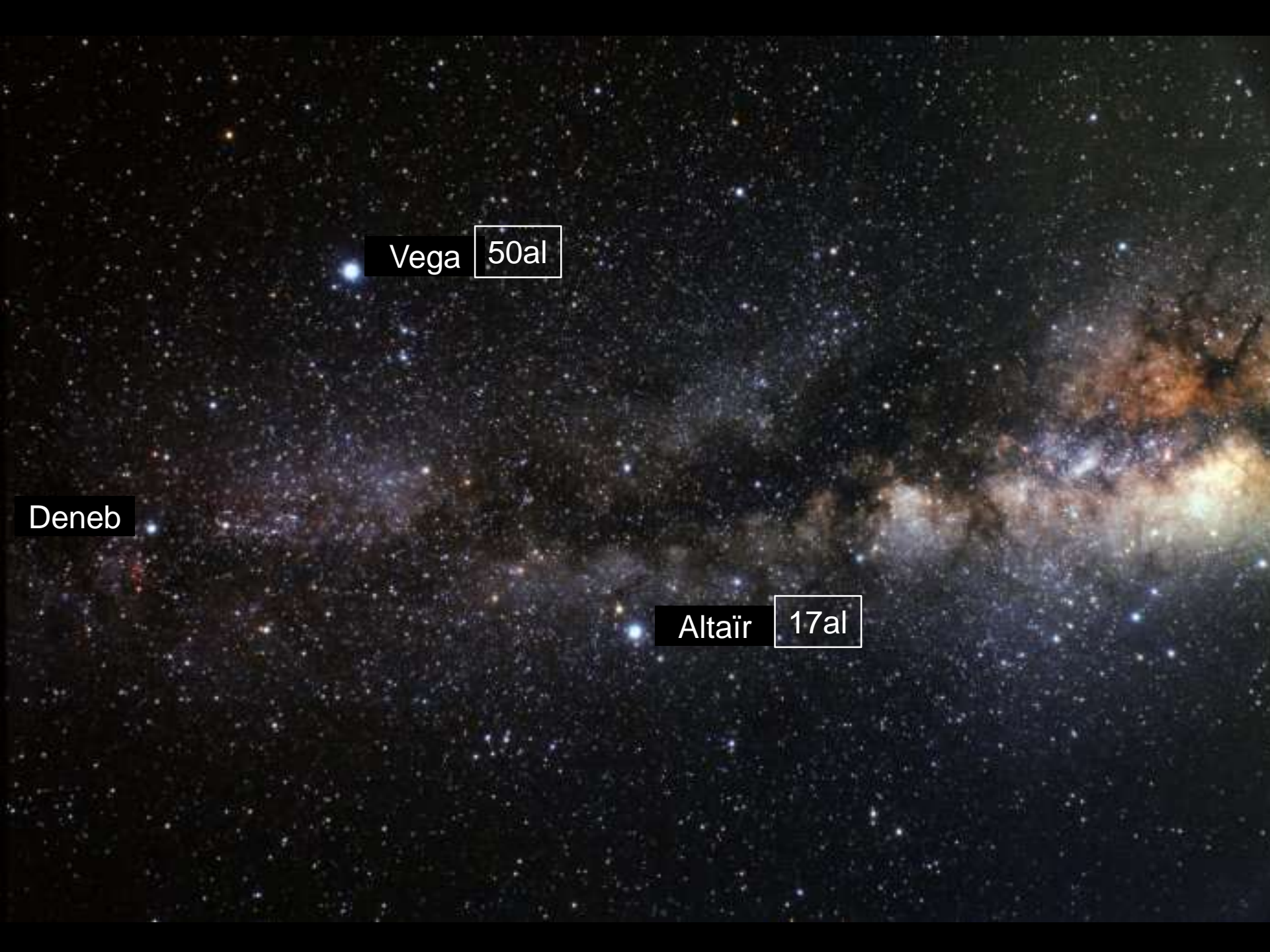


Vega

Deneb

Altair

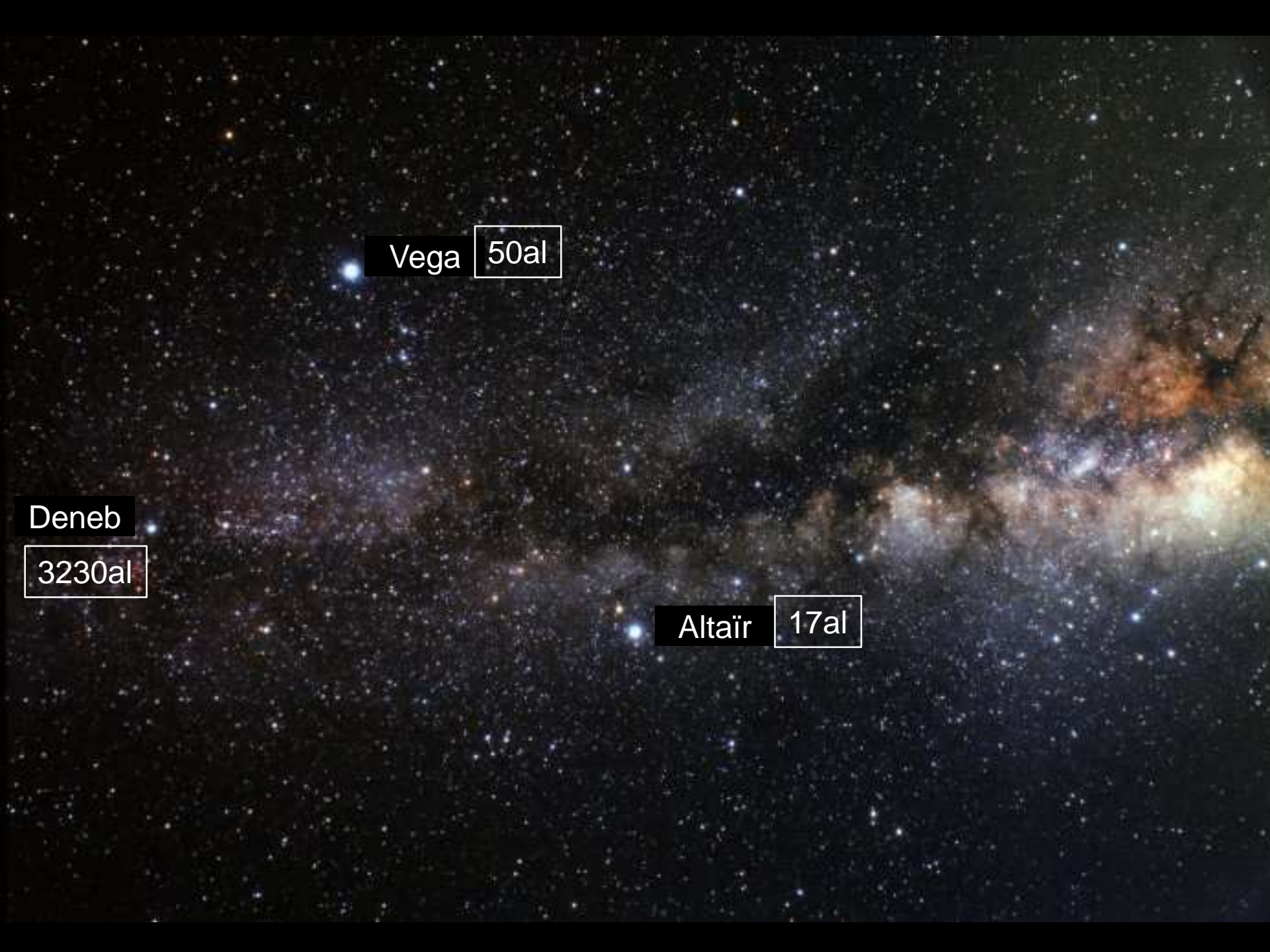
17al



Vega 50al

Deneb

Altair 17al



Vega 50al

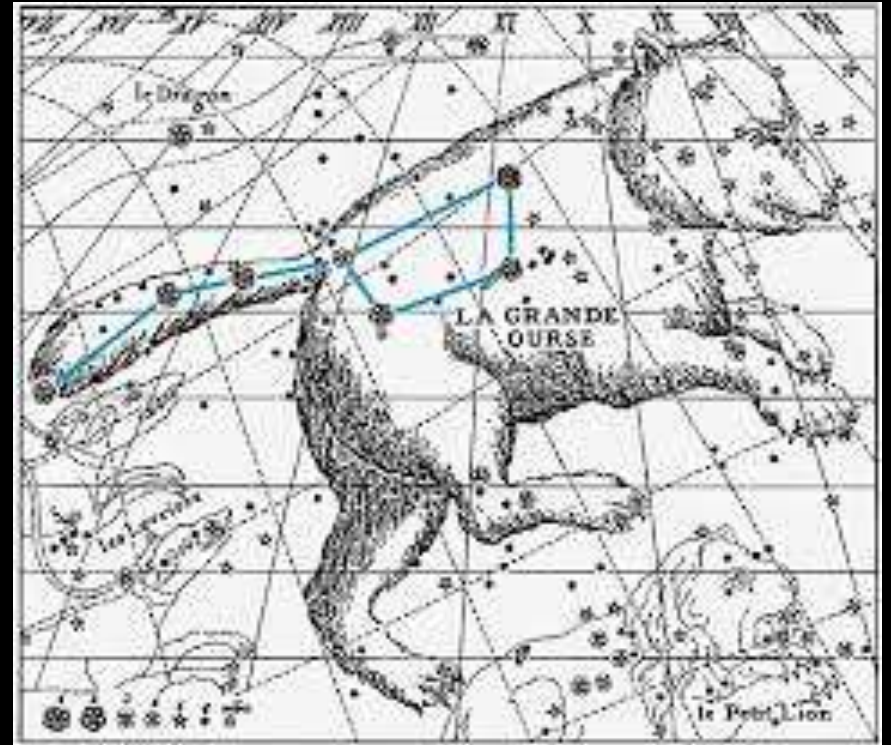
Deneb

3230al

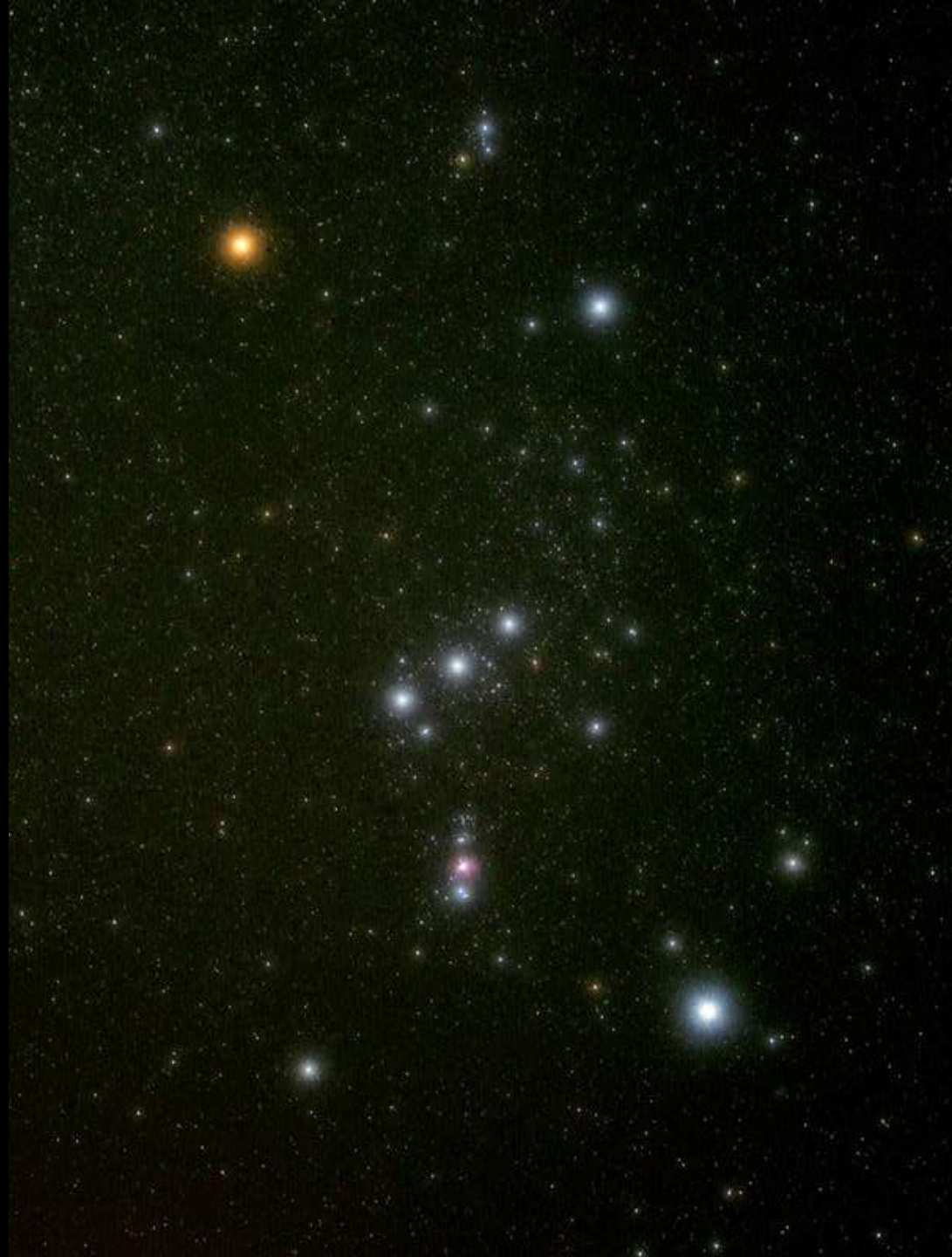
Altair 17al



# La Grande Ourse

















Naissance d'étoile dans la nébuleuse d'Orion



protubérance

jets coronaux

Photosphère  
(granules)

taches  
solaires

chromosphère

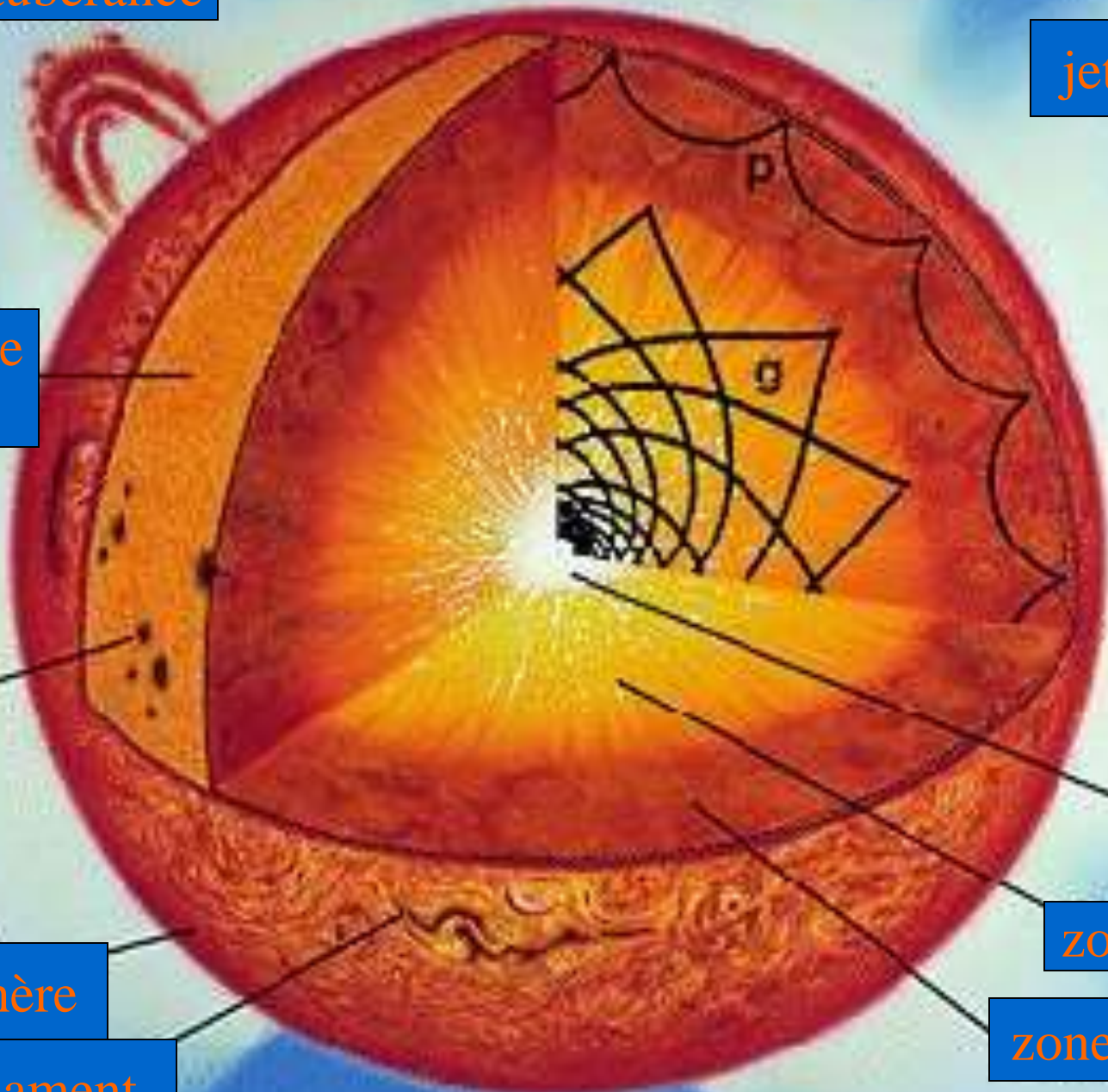
filament

trou coronal

cœur  
nucléaire

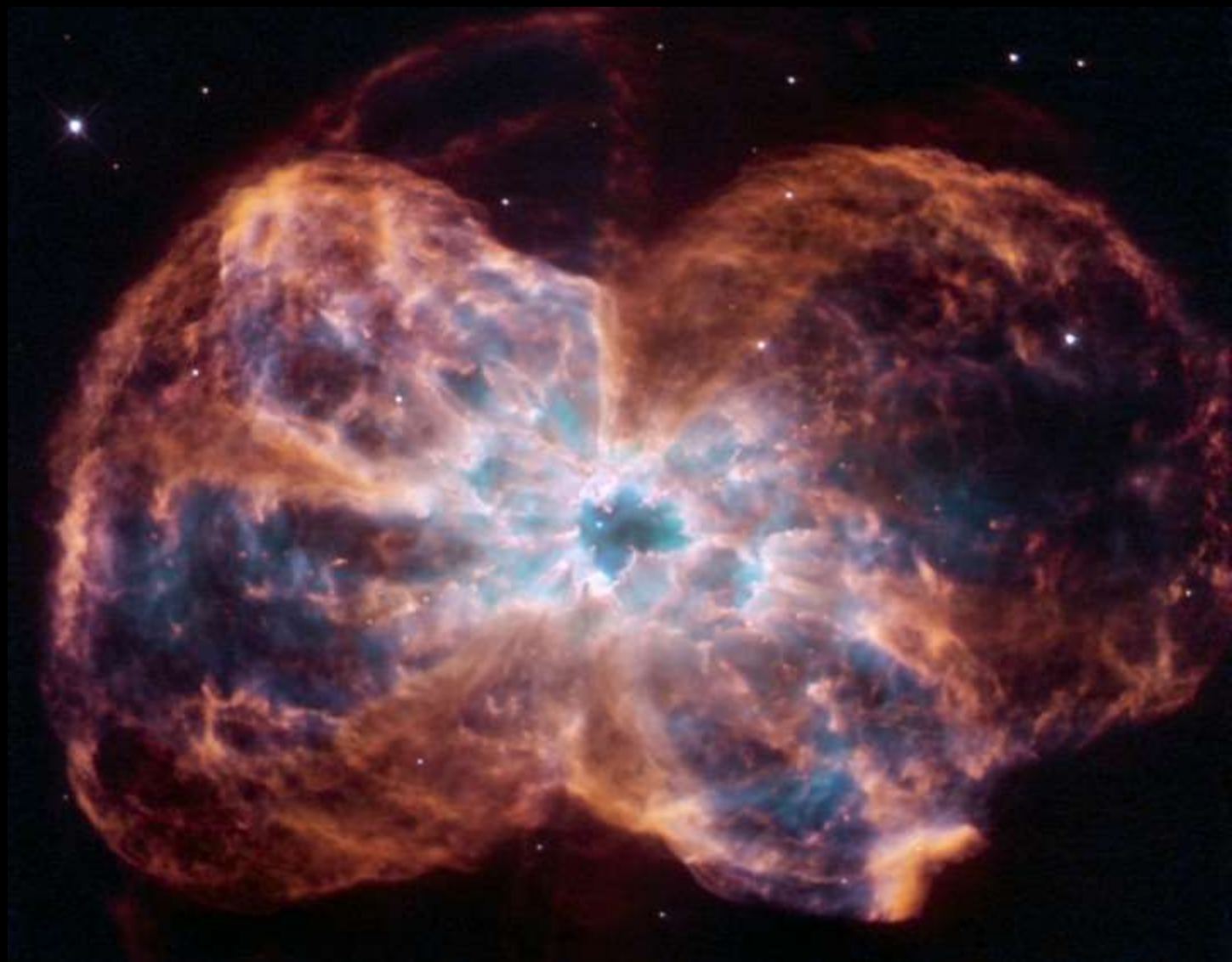
zone radiative

zone convective





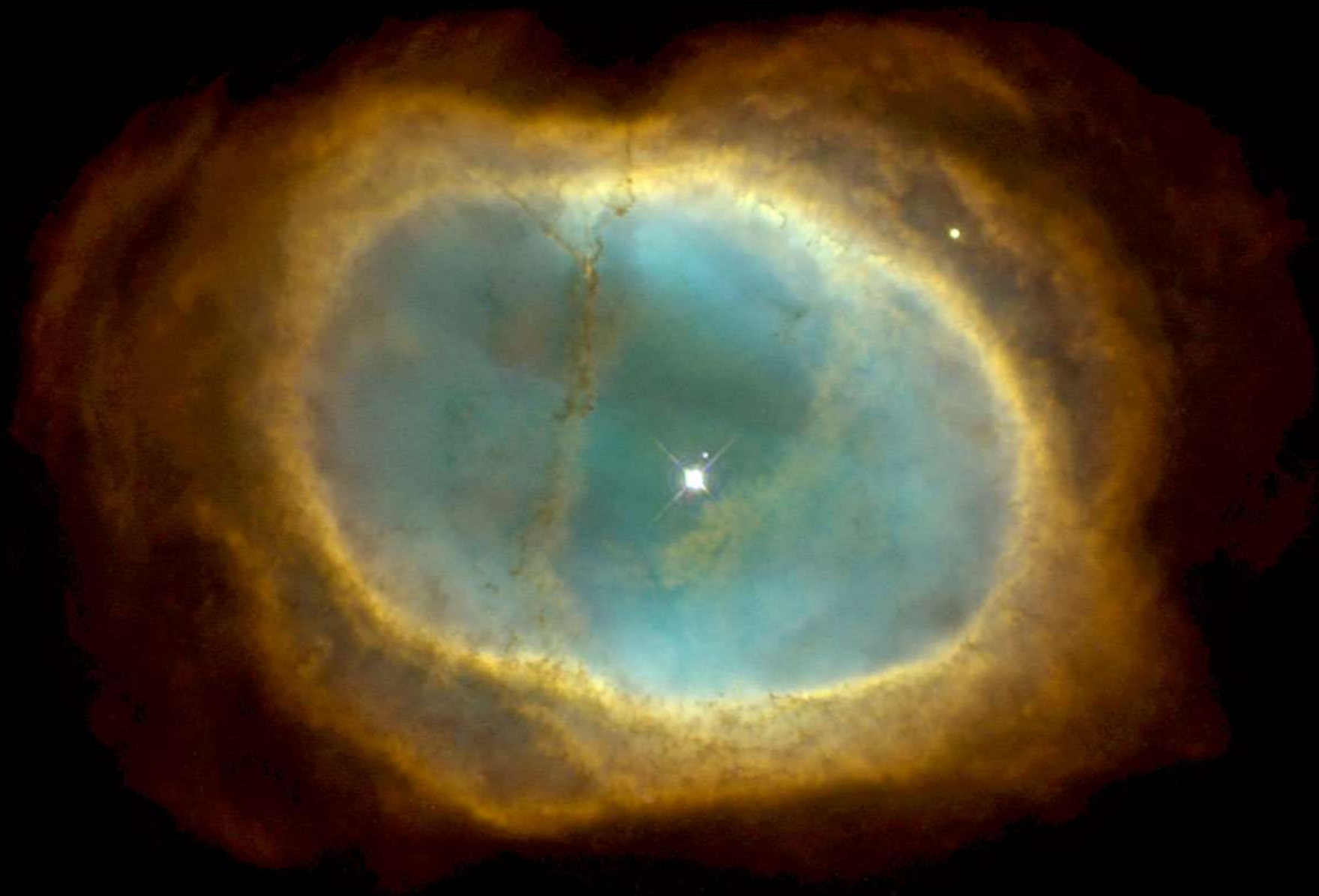
La fin du Soleil

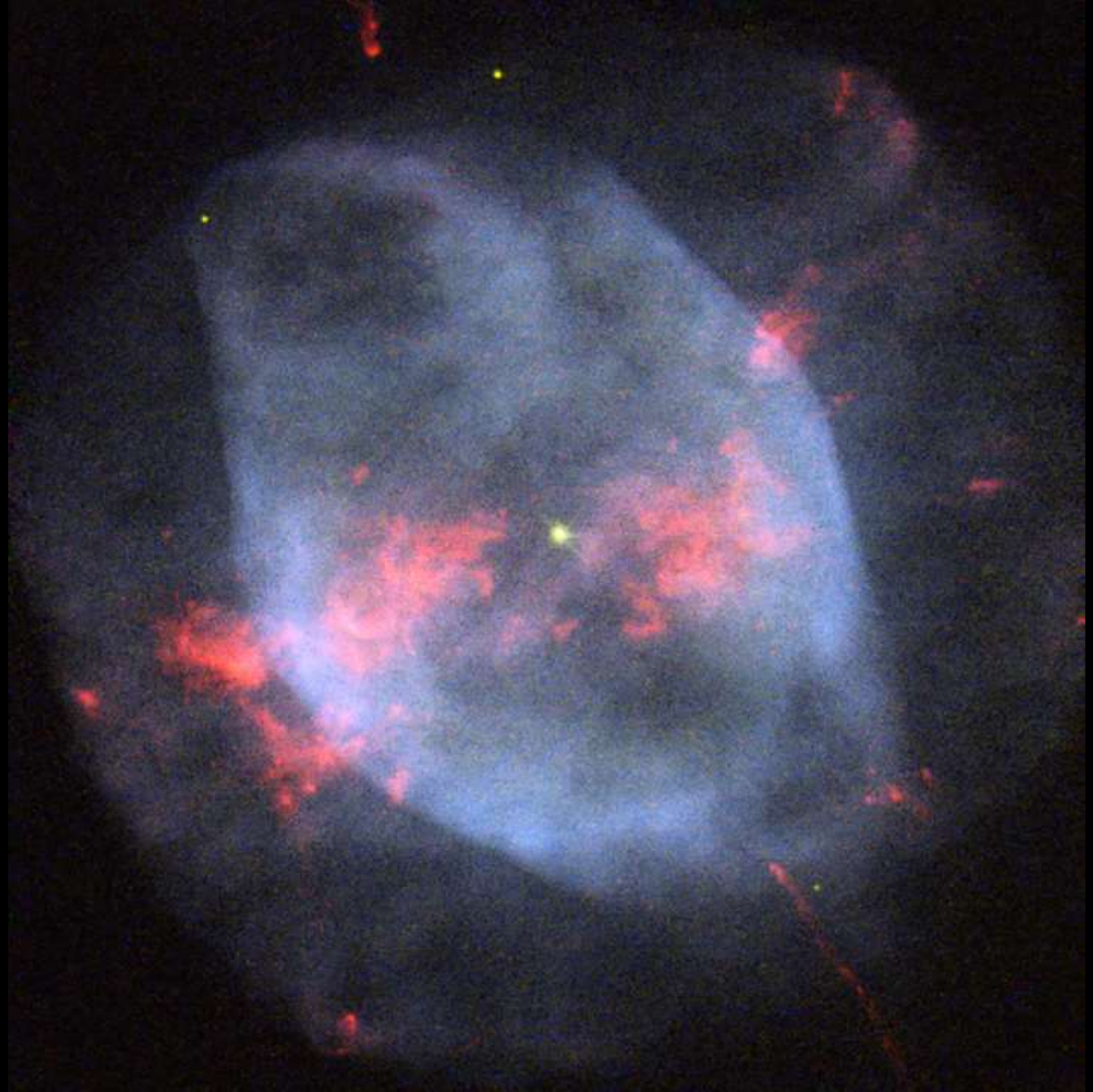


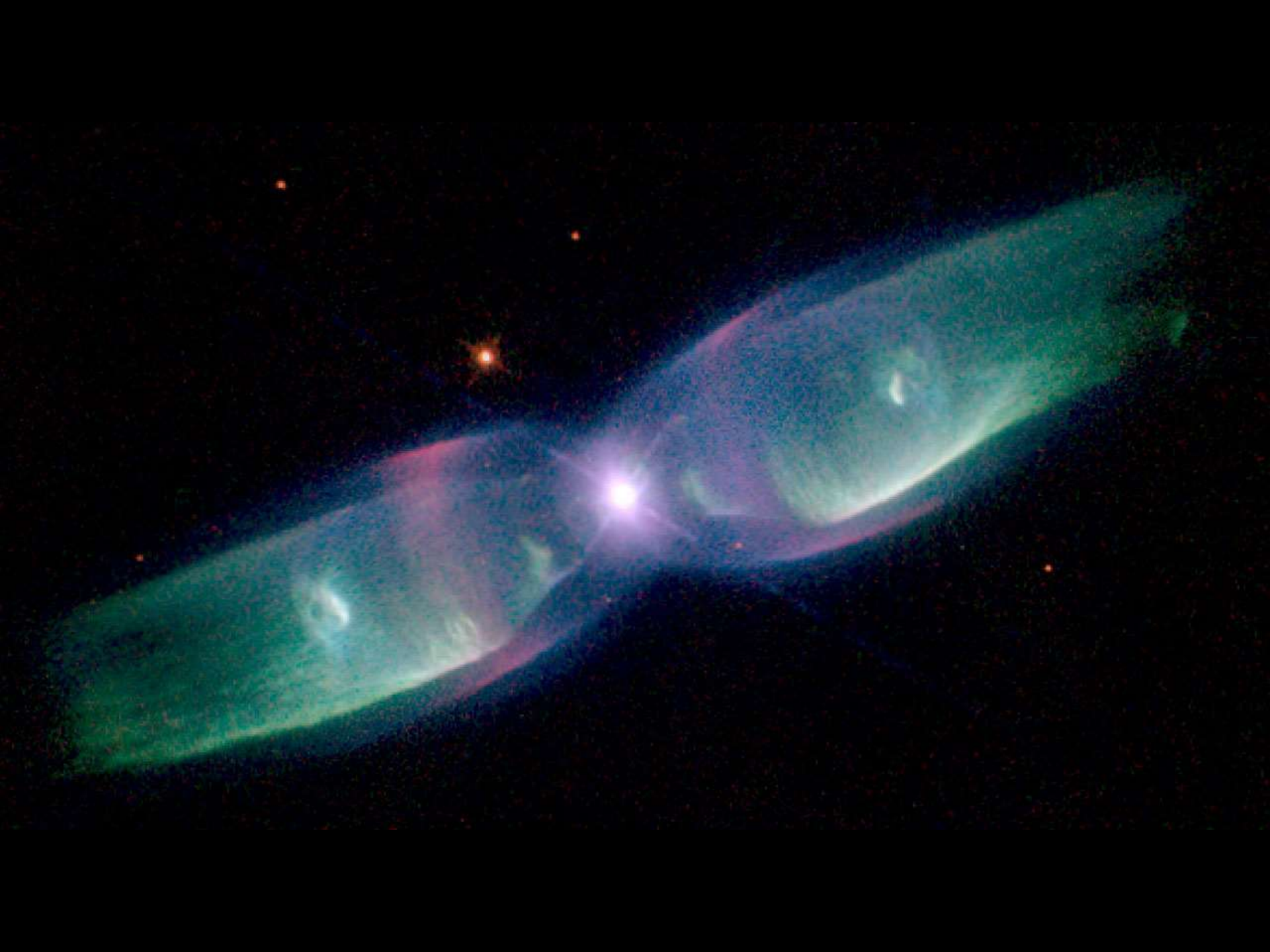












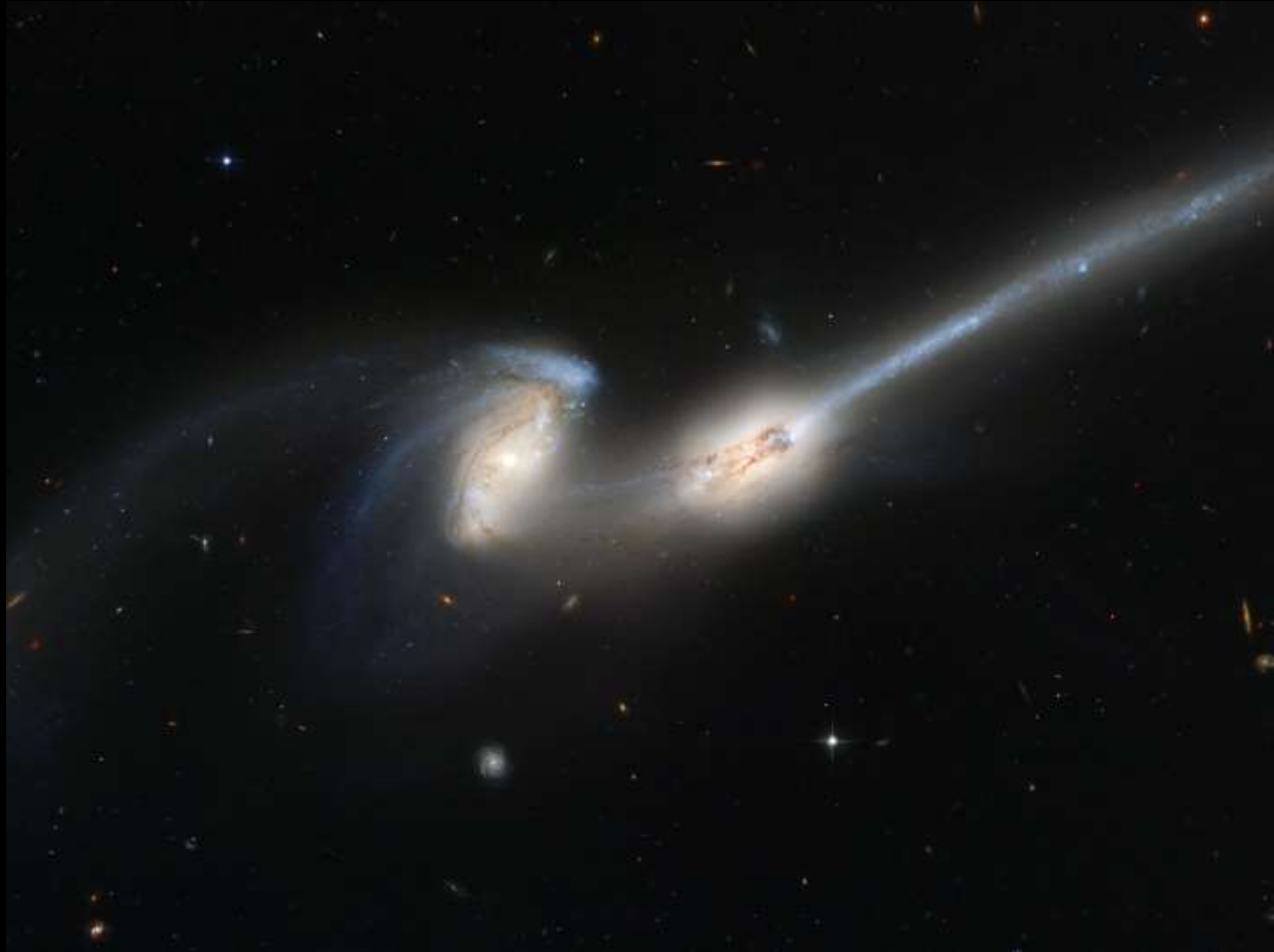



















In 3.75 billion years



In 4 billion years

A night sky filled with stars, with a very bright star in the center. The bottom of the image shows a dark silhouette of a landscape with some structures. The text "In 6 billion years" is overlaid on the lower left part of the sky.

In 6 billion years

# Le Pic du Midi de Bigorre - 2877m



Retour à la maison



## Pic du Midi



Réserve Internationale de Ciel Etoilé

Label IDA  
(International Dark Sky Association)

251 communes engagées





A close-up photograph of a cluster of bright yellow crocuses. The flowers are in various stages of bloom, with some fully open and others as buds. The petals are a vibrant, saturated yellow. The green leaves are long, narrow, and blade-like, growing upright from the base of the plants. The ground is covered with dark, rich soil and scattered dry, brown leaves and twigs, suggesting a woodland or garden setting. The lighting is bright, creating strong highlights on the petals and deep shadows in the surrounding foliage.

A suivre ...